

Alpine Area

Sunny Glenn

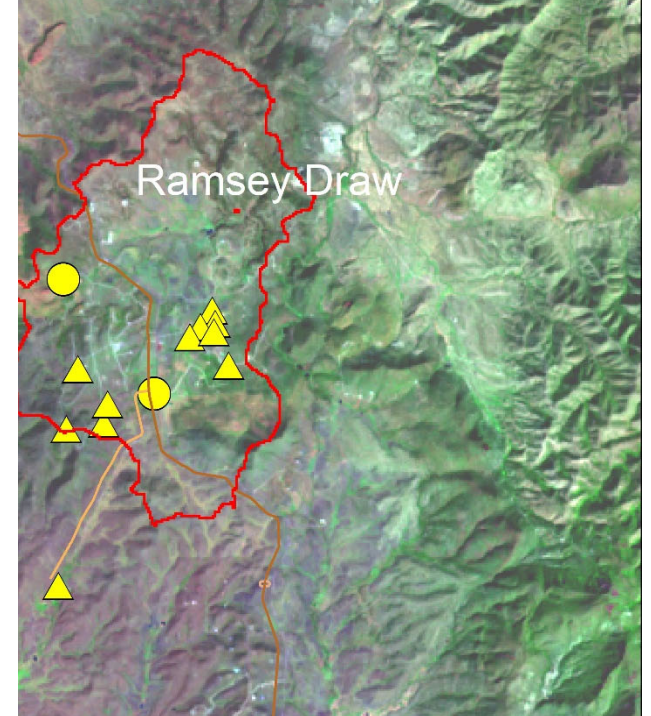
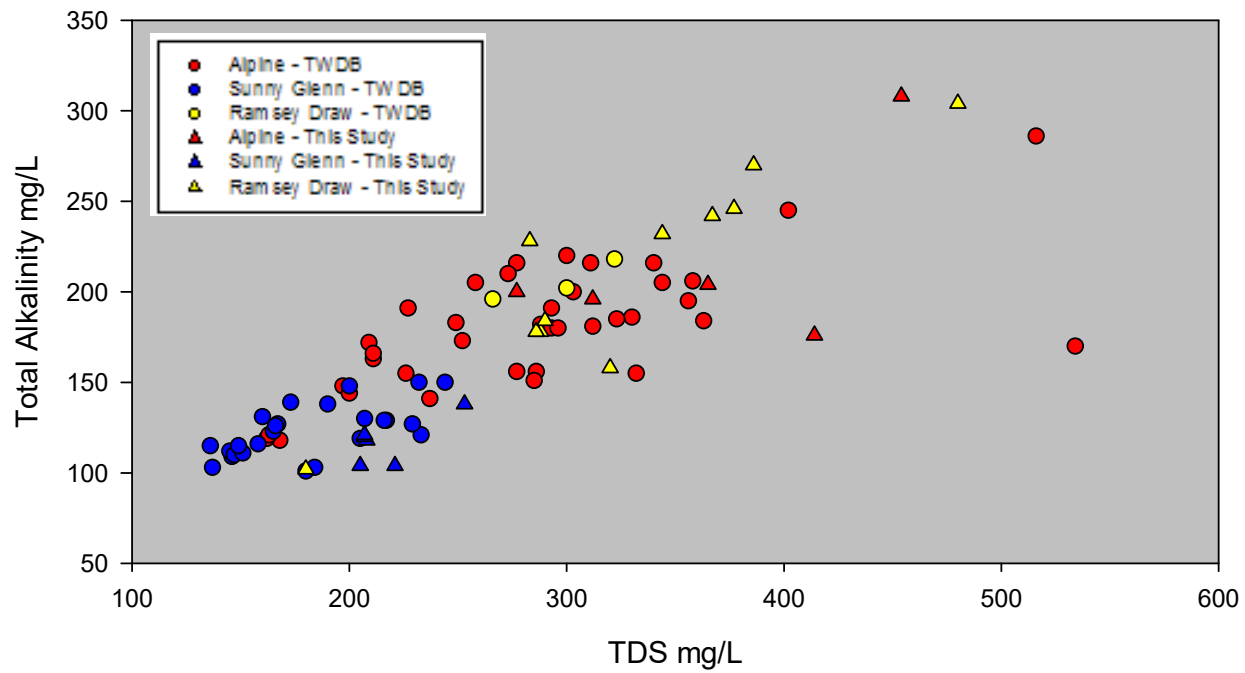
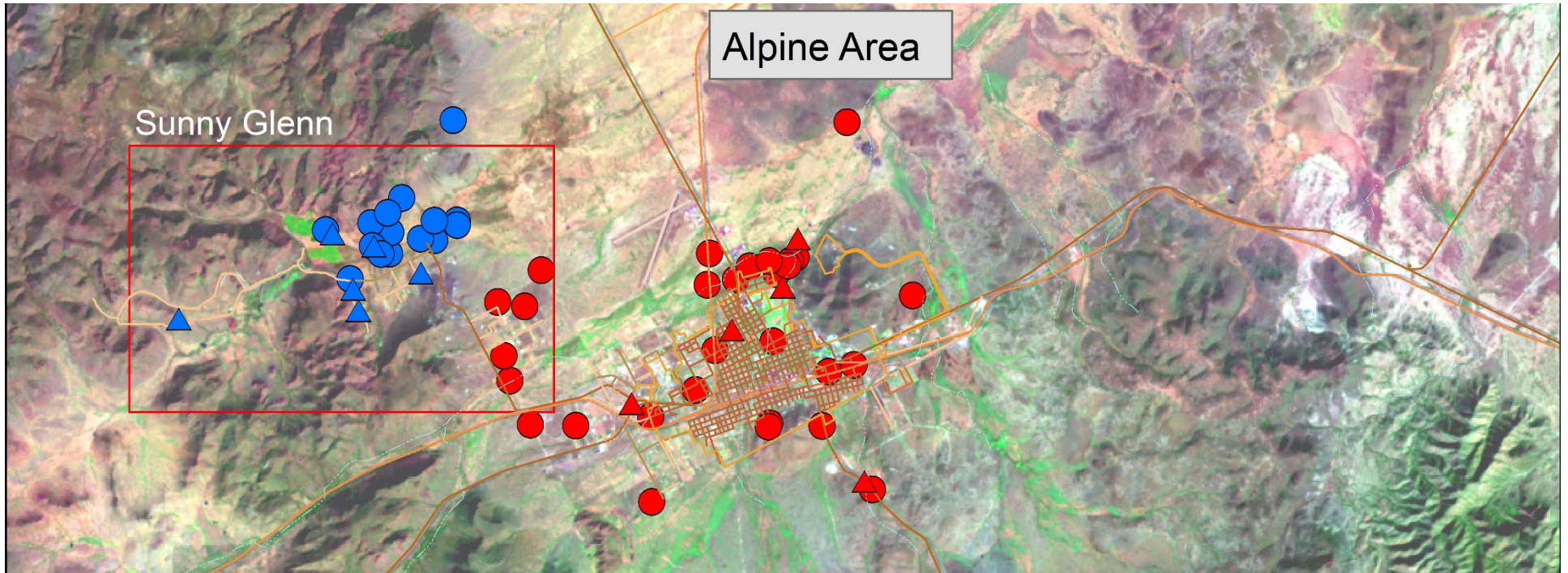
Ramsey Draw

Legend
Blue = Sunny Glenn
Red = Alpine
Yellow = Ramsey Draw

Circles = TWDB data
Triangles = This study

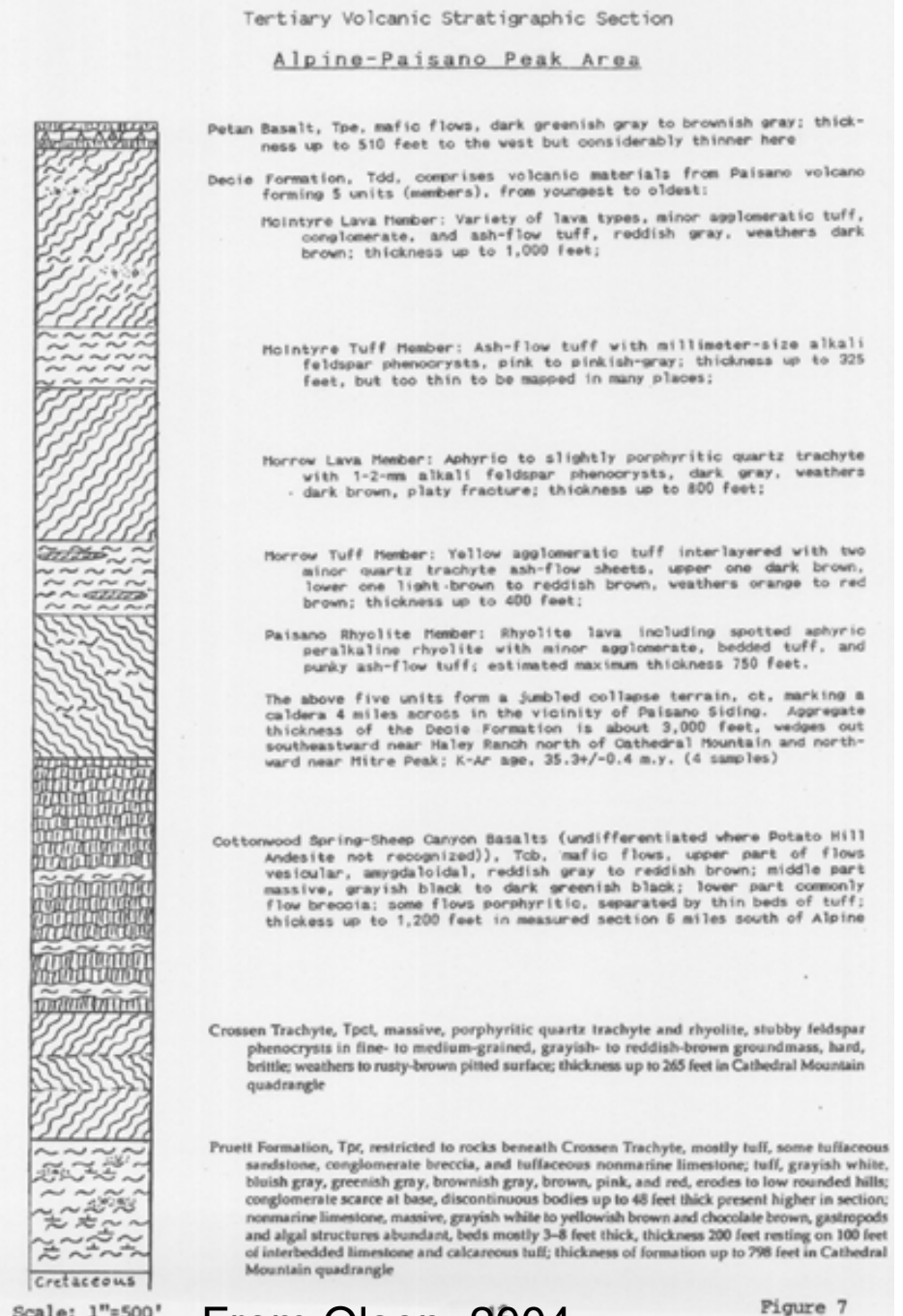
0 0.5 1 2 3 4 Kilometers

Landsat 9/30/99; 642 band combination



Regional Geology

- The aquifer system for the Alpine area is referred to as an “igneous aquifer”
- It is composed of layered volcanic and volcanoclastic rocks of the Buck Hill Volcanic Series; specifically:
 - The Decie formation associated with the *peralkaline* Paisano volcano
 - Mafic lavas that comprise a small lava plateau, these include the Cottonwood spring basalt, Potato Hill andesite, Sheep Canyon basalt, and Crossen Trachyte

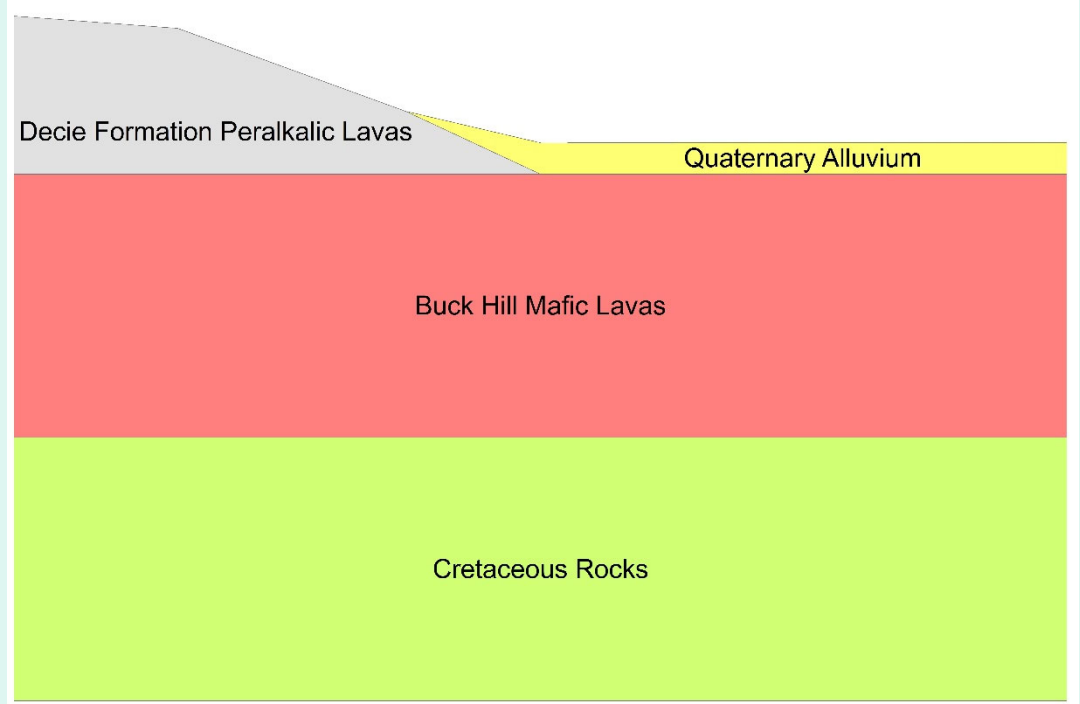


From Olson, 2004

Figure 7

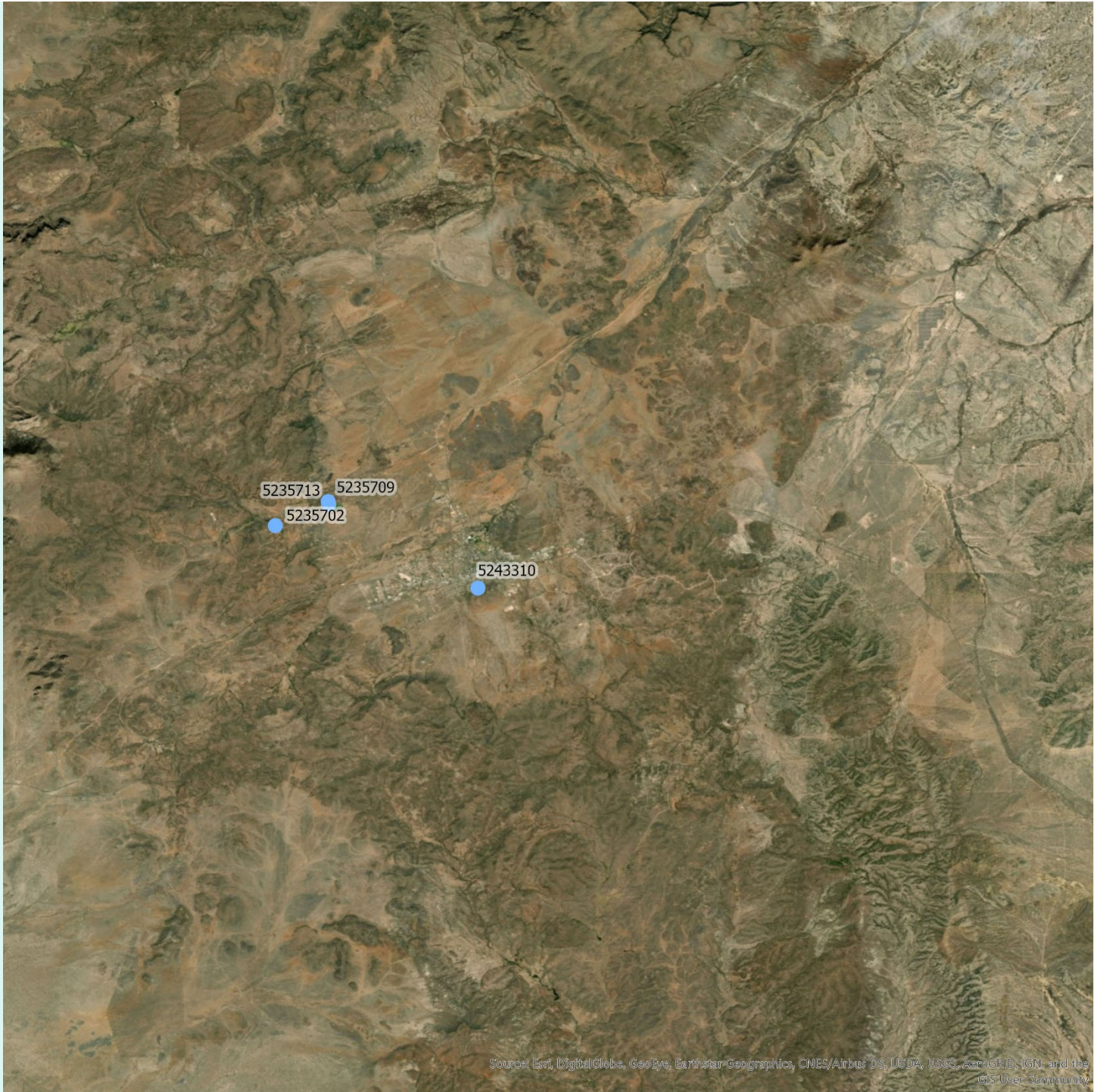
Conceptual Model

- The model layers will include:
 - Quaternary Alluvium
 - Decie Formation Peralkalic Lavas
 - Buck Hill Mafic Lavas
 - Cretaceous Rocks

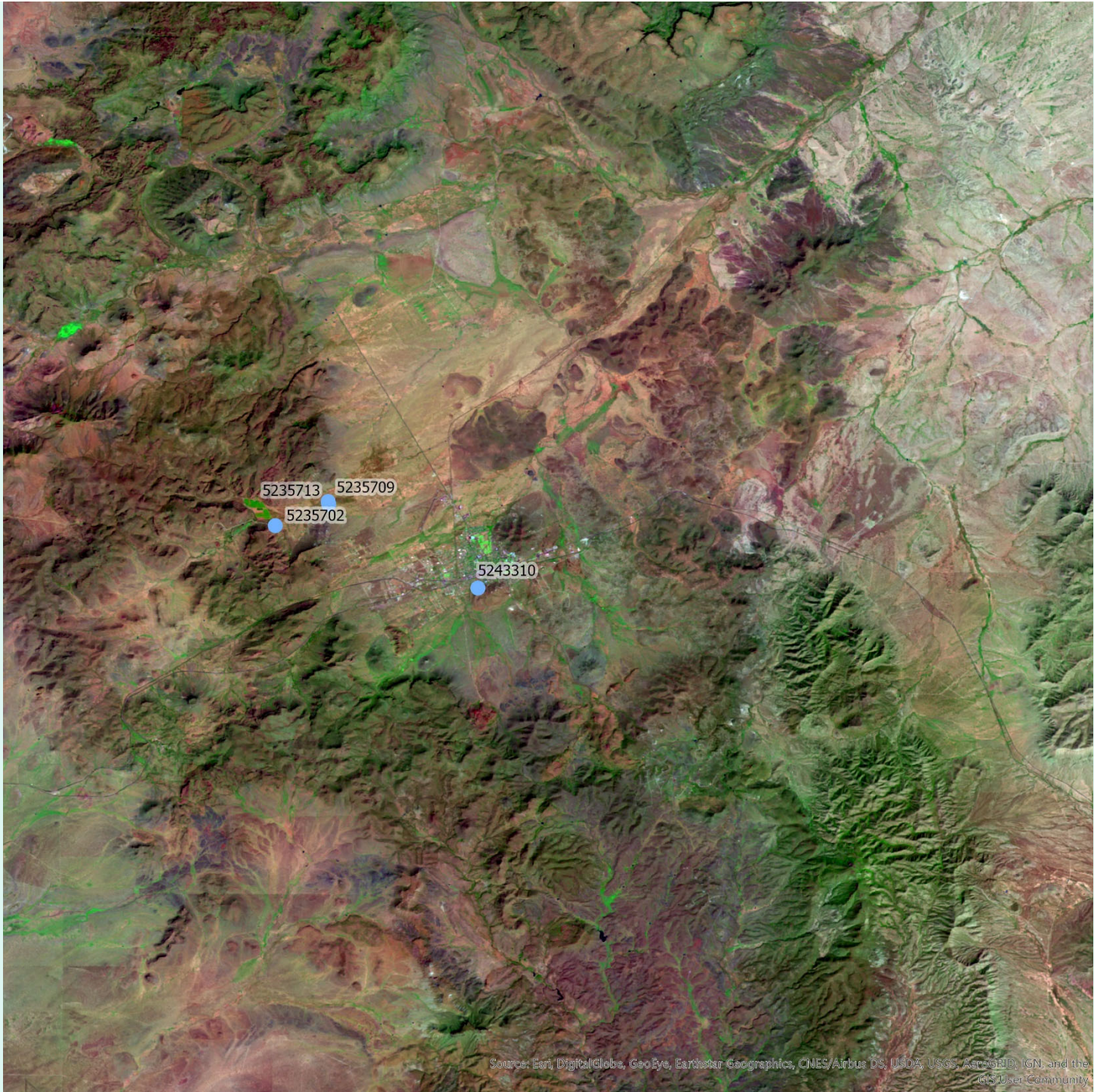




Source: Esri, DigitalGlobe, GeoEye, Earthstar Geographics, CNES/Airbus DS, USDA, USGS, AeroGRID, IGN, and the GIS User Community

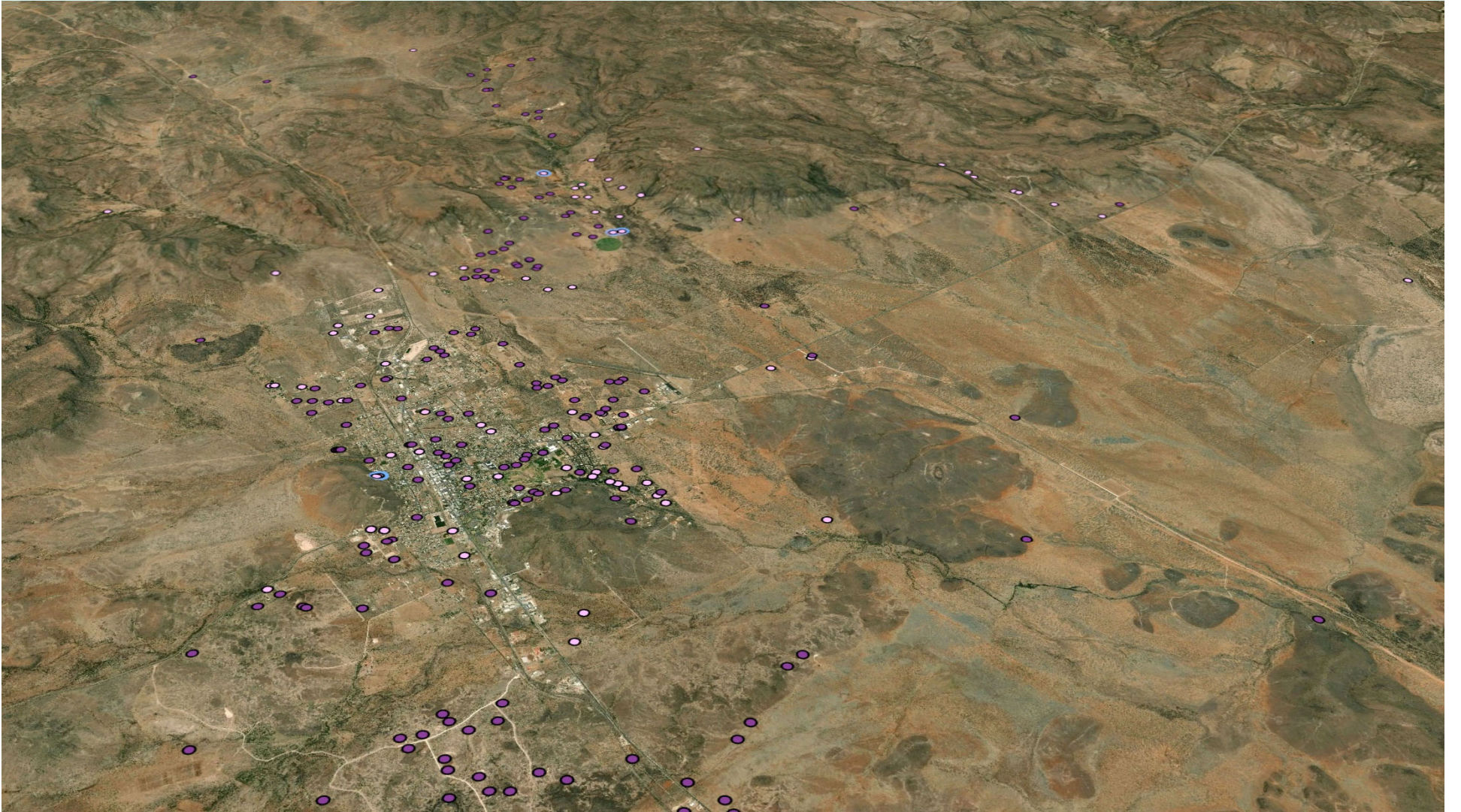


Source: Esri, DigitalGlobe, GeoEye, Earthstar Geographics, CNES/Airbus DS, USDA, USGS, AeroGRID, IGN, and the GIS User Community



Source: Esri, DigitalGlobe, GeoEye, Earthstar Geographics, CNES/Airbus DS, USDA, USGS, AeroGRID, IGN, and the GIS User Community





Frequency of Water Level Measurements

